

National  
DefenceDéfense  
nationale

CANADIAN JOINT OPERATIONS COMMAND

CHIEF OF STAFF SUPPORT



# Impact of SSE on Operations Enterprise

The information in this presentation is classified as  
**CAN UNCLASSIFIED.**

**LCol Adam Zima, CJOC COS Support Corporate**

**OPI:** LCol S.A. Zima, COS Support Corporate

**DTG:** 281315L November 2018

**Version:** Version 1

**File Location:**





# Briefing Overview

## Aim

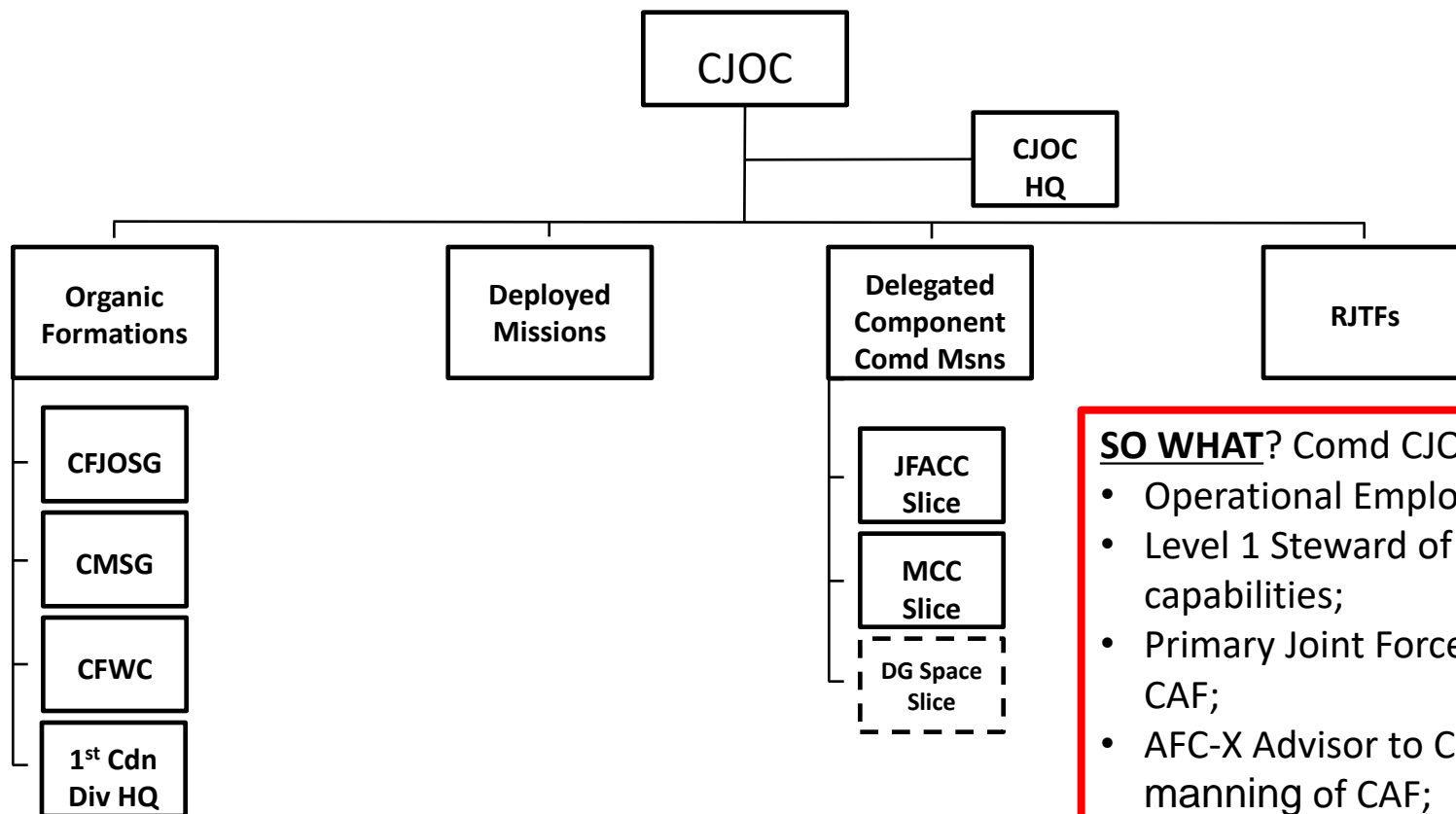
To inform CMEA conference participants about the impact of Strong, Secure, Engaged on the operations enterprise.

## Outline

1. CJOC Today
2. Current Operations
3. Strong, Secure, Engaged
4. Implications of SSE
5. Uncomfortable Questions



# The Dual Roles of CJOC



## SO WHAT? Comd CJOC is:

- Operational Employer for CDS;
- Level 1 Steward of certain CAF capabilities;
- Primary Joint Forces Advocate in CAF;
- AFC-X Advisor to CDS on the manning of CAF;
- 3 IC of CAF;

# Canadian Armed Forces Operations

North America

N

Latin America &amp; Caribbean

L

Europe

E

Middle East

M

Africa

I

A

Asia Pacific

P

## NA

- Sp to Dom Ops incl Op LENTUS 18
- Sp to EVONAD planning, Arctic Ops

## LAC/IAP (0/1/1)

- OSH LAC Improvements
- Sp to Op CARIBBE
- Guatemala Ops Center Project
- FF Sp to Op PROJECTION (MV ASTERIX)

## EUROPE – UNIFIER (22/0/22)

- Engr Trg and Develop Coordination: LOO 2
- EOD Capability Development
- Bde/BG Mentoring
- Institutional Trg Development
- ETHAR Mobile Trg Teams

TOTAL MISSIONS	22
Support Ops:	31
Continental Ops:	155
Expeditionary Ops:	2552
Total Deployed:	2738

## EUROPE – REASSURANCE (20/27/47)

- TF LATVIA: TF Engr Cell, Major Project Mgmt
- eFP BG: ESCC and Geo, NSE ESS Sqn, FF
- ATF ROMANIA: Constr Tp, FF

## MIDDLE EAST (64/39/103)

- Op IMPACT/OSH SWA: TF Engr, Constr Tp, Geo
- Engr Sp to NMI
- ET3: EOD Trg Tp, RCP Trg Tp (Iraq)
- TFME: Project Sp to CTAT JOR/LEB (JOR)
- Det ERBIL: Camp Sustain
- Op CALUMET: Project Engr, Constr, Geo
- Sp to UN Missions (JADE, PROTEUS)
- Reachback sp to Op FOUNDATION/ARTEMIS

## AFRICA (12/2/14)

- Op Presence MALI – Engr Sustainment, Geo, Theatre Opening/Closure
- OSH-WA
- TAL Det Entebbe – Recce and Planning
- Future PSO – Awaiting GC direction.
- Reachback sp to Op NABERIUS, UN Missions

Rogers Pass (17) Op PALACI	N1	Niger (27) Op NABERIUS	A3	Kuwait (11) OSH SWA	M4	Cyprus (1) Op SNOWGOOSE/UNFICYP	E2	Afghanistan (19) Op ADDENDA	P1						
Caribbean/Eastern Pacific (135) Op CARIBBE	L1	Mali (323) Op PRESENCE	A4	Bahrain/Qatar (15) Op FOUNDATION	M5	Kosovo (5) Op KOBOLD/KFOR	E3	Korea/Japan (16) UNC/UNIMAC	P2						
Op GLOBE (3)	L2	Jerusalem (21) Op PROTEUS	M1	Iraq (497) Op IMPACT JTF-I	M6	Germany (4) OS Hub HQ (3) & ILEA (1)	E4	Indo Asia Pacific (279) Op PROJECTION MTF	P3						
South Sudan (10) Op SOPRANO/UNMISS	A1	Middle East (4) Op JADE/UNTSO	M2	Jordan/Lebanon (48) TFME	M7	Ukraine (193) Op UNIFIER	E5	<div>Total Engineers Deployed</div> <table><tr><th>TO&amp;E</th><th>TAVs</th><th>Totals</th></tr><tr><td>118</td><td>68</td><td>187</td></tr></table>		TO&E	TAVs	Totals	118	68	187
TO&E	TAVs	Totals													
118	68	187													
DR Congo (9) Op CROCODILE/MONUSCO	A2	Sinai (66) Op CALUMET/MFO	M3	Europe (851) Op REASSURANCE MTF (260) / eFP (445) / ATF (136)	E1	Norway (184) Ex TRIDENT JUNCTURE JOINTX	E6								

23 Nov 18

UNCLASSIFIED

Canadian Joint Operations Command



# Operations

## Africa

- Task Force Mali ops proceeding very well.
- Entebbe, C130J option delivered.
- Small distributed missions elsewhere (S. Sudan, DRC, Niger, Egypt).
- No planning authority for other Vancouver Summit pledges.
- Engineers on Op CALUMET (4), Op PRESENCE (12)



## Eastern Europe

- Op REASSURANCE extended four more years.
- “most multinational” Battle Group
- CJOC’s desire for Jointness in Latvia (CF-18, MCDV).
- Ex TRIDENT JUNCTURE.
- UNIFIER MC to Cabinet.
- Engineers on Op REASSURANCE (47), Op UNIFIER (22)



## Canada / North America



- Op LENTUS 18: Outstanding results. Next step is Res F earlier in.
- EVONAD: CJOC’s conscientious to setting more operational context/options to support CDS advice upward.

## Middle East

- Rebalancing CJTF-OIR with emerging NMI Mission.
- Comd JTF-I as NCE for all Canadians in Iraq.
- C2 rationalization.
- Cabinet to consider “ME Strategy”.
- Engineers on Op PROTEUS (1), Op JADE (1), Op IMPACT (93), TF ME (3), Op ARTEMIS (1).



## Indo-Asia-Pacific and Caribbean

- Op CARIBBE
  - 3 x MCDV and 1 x CP140 ( Fall 18 iteration).
- Outstanding RCN/RCAF contributions to INDOPACOM
  - ECC enforcement off Korea (CP140, FFH, MV Asterix).
  - MV Asterix’s contributions to coalition Ops.
- Op RENAISSANCE TAL Det in Indonesia.
- Engineer on Op PROJECTION (1)



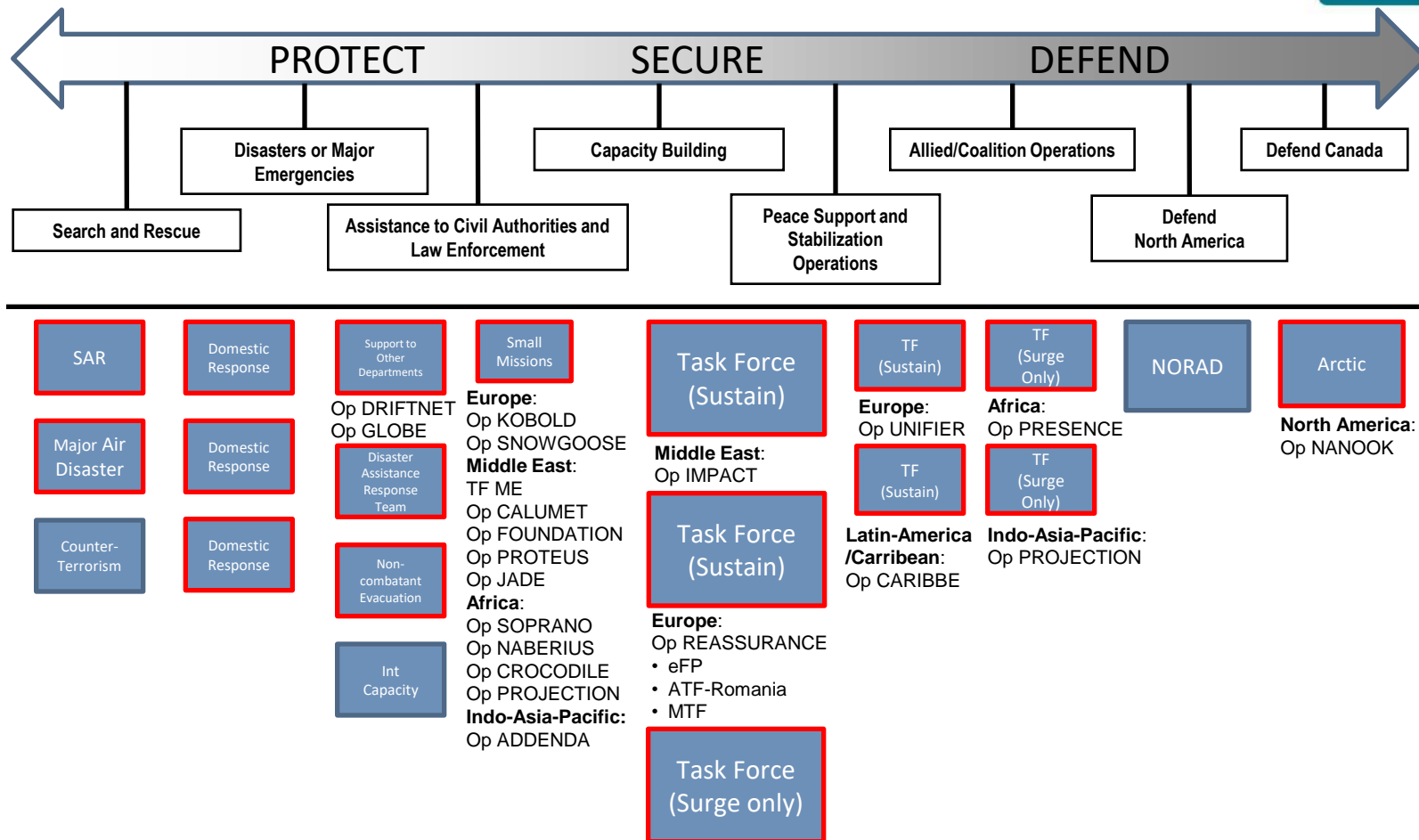




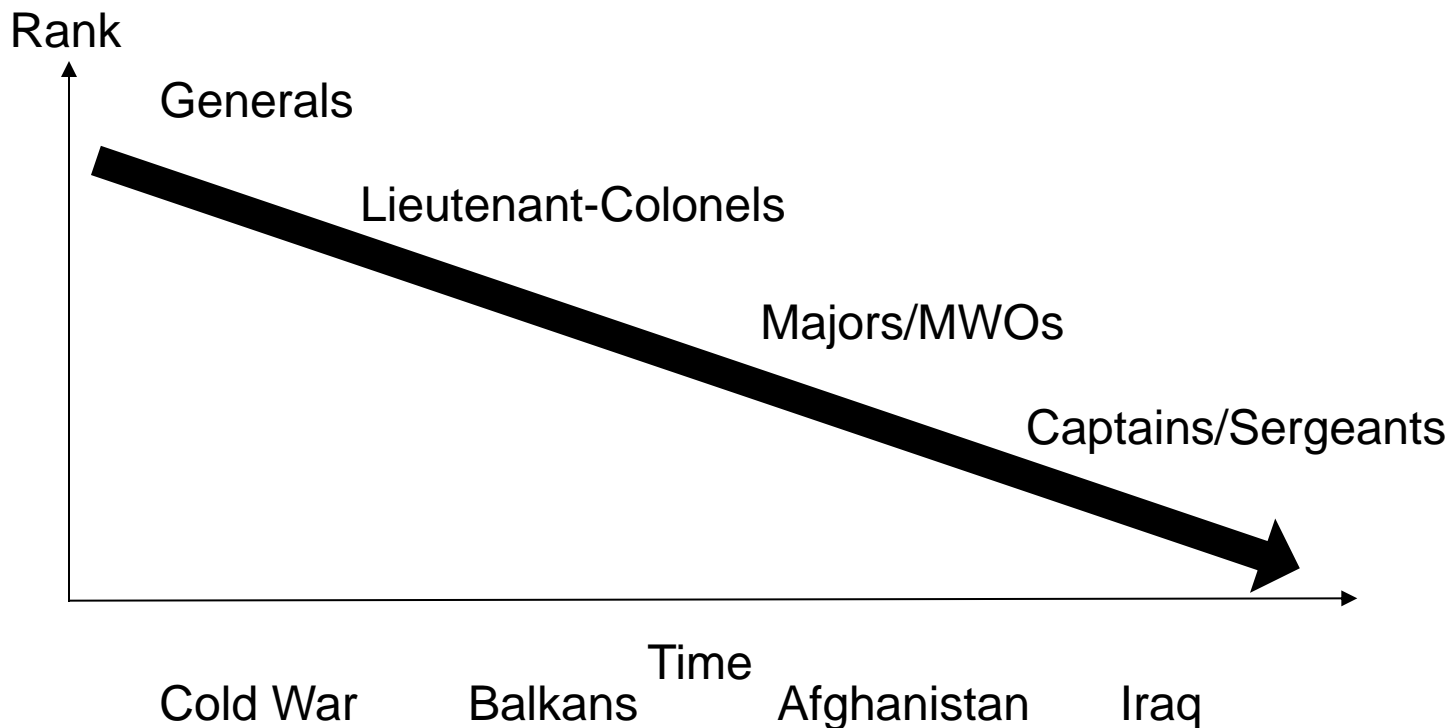
Canadian Armed Forces will be prepared to simultaneously:

- defend Canada, including responding concurrently to multiple domestic emergencies in support of civilian authorities;
- meet its NORAD obligations, with new capacity in some areas;
- meet commitments to NATO Allies under Article 5 of the North Atlantic Treaty; and
- contribute to international peace and stability through:
  - ✓✓ – two sustained deployments of ~500-1500 personnel in two different theatres of operation, including one as a lead nation;
  - ✗ – one time-limited deployment of ~500-1500 personnel (6-9 months duration);
  - ✓✓ – two sustained deployments of ~100-500 personnel;
  - ✓✓ – two time-limited deployments (6-9 months) of ~100-500 personnel;
  - ✓ – one Disaster Assistance Response Team (DART) deployment, with scalable additional support; and
  - ✓ – one Non-Combatant Evacuation Operation, with scalable additional support.

1  
+  
1  
+  
9  
= 11 missions



# The Canadian Arc Of Warfare Since mid 1980s







# Implications of SSE

*“Joint operations needs a HQ that in every way, shape and form is fluid... information and knowledge must flow along with the energy to act. It should be less industrial and more informed... through words, technology and leaders.”*

- CJOC Optimisation (Round 2)

- End state: a HQ with clear decision rights (at what level), aligned information flows (free moving across boundaries) and aligned motivators (leading to structure changes)

- Maddison/Purdy study

- Future Joint Forces Command
- Realignment of CAF national enablers



# Uncomfortable Questions

- What is the future role of CJOC J Engr?
- What is CJOC J Engr's relationship with CME?
- Where are the joint engineer enablers to provide operational effects?
  - Are Construction Engineer elements joint troops?
  - Do they belong embedded within the ECS?
- What is the value proposition of engineers in distributed warfare?

National  
DefenceDéfense  
nationale

# Questions?

Canada