



Royal Canadian Air Force

CMEA National Conference

Training & Operations Panel

28 Nov 18

Presented by

LCol Ken Brooks, RAWC

Strong Secure Engaged

- Articulates critical role of air and space power throughout
- Allows for unique needs of RCAF personnel
- Requires infrastructure investment – we fight from our Wings





A New Canadian Vision for Defence: STRONG, SECURE, ENGAGED.

STRONG at home



- Steadfast defence of Canada
- Rapid disaster response
- Effective search and rescue
- Enhanced presence in the Arctic
- Innovative defence sector

SECURE in North America



- Continuous watch over Canadian air and sea approaches
- Modern and effective NORAD
- Strong defence relationship with the U.S.
- Cutting edge defence research

ENGAGED in the world



- Robust commitment to NATO, UN and Coalitions
- Support to Canadian interests and humanitarian assistance
- Improved early warning
- Integrated capacity building with partners

**AGILE, COMBAT READY CANADIAN ARMED FORCES
AND RESILIENT PEOPLE AND FAMILIES**

Posture and Readiness

“We must build/structure the force we need to satisfy SSE and measure ourselves against it”

CONCURRENT OPERATIONS

This policy ensures the Canadian Armed Forces will be prepared to simultaneously:

- Defend Canada, including responding concurrently to multiple domestic emergencies in support of civilian authorities;
- Meet its NORAD obligations, with new capacity in some areas;
- Meet commitments to NATO Allies under Article 5 of the North Atlantic Treaty;
- Contribute to international peace and stability through:
 - Two sustained deployments of ~500-1500 personnel, including one as a lead nation;
 - One time-limited deployment of ~500-1500 personnel (6-9 months duration);
 - Two sustained deployments of ~100-500 personnel;
 - Two time-limited deployments (6-9 months) of ~100-500 personnel;
 - One Disaster Assistance Response Team (DART) deployment, with scaleable additional support; and
 - One Non-Combatant Evacuation Operation, with scaleable additional support.

**Reporting
Current Posture**

**Force Posture &
Readiness
(SJS)**

Force Elements

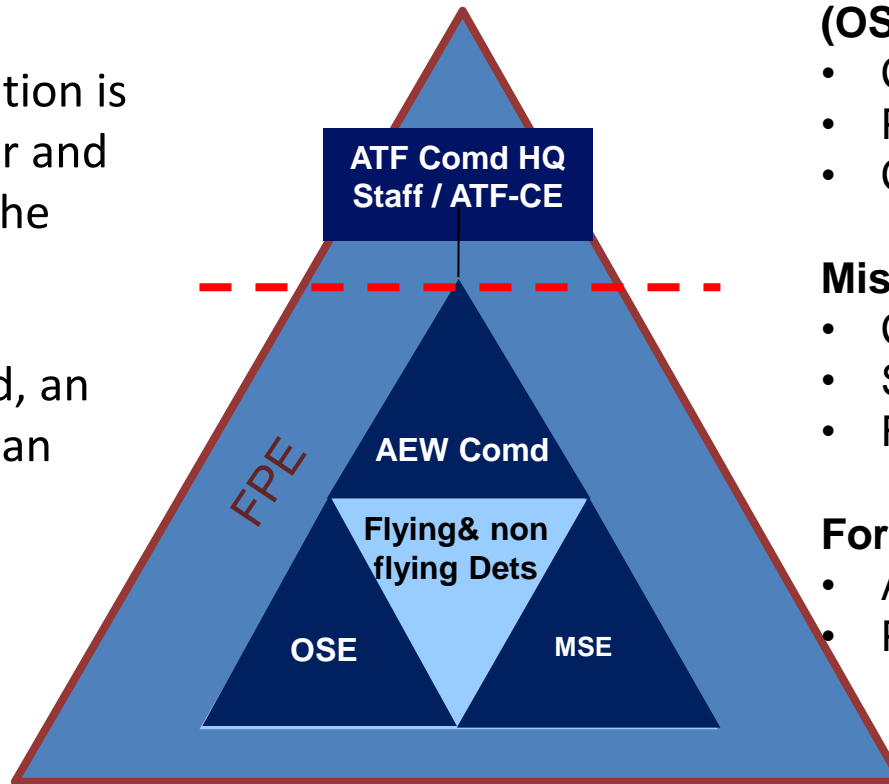
**Designing the
Future
Structure**

**Force Mix
Structure
Design
(CFD/VCDS)**

**Defence Team
Establishment Plan**

The Air Task Force model

- The ATF is the means by which the RCAF will present its forces
- The ATF composition is scalable, modular and task-tailored to the mission
- When/if required, an ATF may include an AEW/AESS



ATF Comd / HQ / Coord Elm

Operations Support Element (OSE)

- Current Ops (incl Int & Met)
- Planning / Airfield Ops liaison
- Comm Info Systems (CIS)

Mission Support Element (MSE)

- Construction Engineers (CE)
- Supply / Transport / EME
- Food / HR / Fin

Force Protection Element (FPE)

- Airfield Security
- Policing

Concurrent Operations

Q – What is the RCAF remit?

A – Three x ATFs

Q – What type of ATF?

A – Figure it out...



2 WING PLACEMAT

2 Wing - Pers Status (as of 31 Jan)

UNIT	P	V	N	S	S(%)
2 AES	139	17	21	101	73
2 ACCU	25	3	3	19	76
2 ERC	39	3	2	34	87
HQ	26	2	4	20	77
8 ACCS	66	7	6	53	80
4 CES	16	0	5	11	69
TOTALS	311	32	41	238	77

GROUPING	P	V	N	S	S(%)
Air Ops	57	6	3	48	84
CIS	62	5	5	52	84
Engrs	42	7	6	29	69
Int	16	2	5	9	56
MP	13	2	2	9	69
Log	92	7	16	69	75
EME	12	2	1	9	75
Sm Qty MOS	17	1	3	13	76
TOTALS	311	32	41	238	77

P - PML	N - Non Depl	Y = ≤75%
V - Vacant	S - Eff Str	R = ≤50%

2 Wing - Mission Sets

Train the ATF
Validate the ATF
Assist HHQ Planning
Conduct Recce
Coordinate Air Operations
Mount the ATF
Bed down the ATF
Activate the ATF (AFAST)
Command the ATF
Provide Staff Support to the ATF
Support the ATF (OSE, MSE, FPE)
Close the ATF

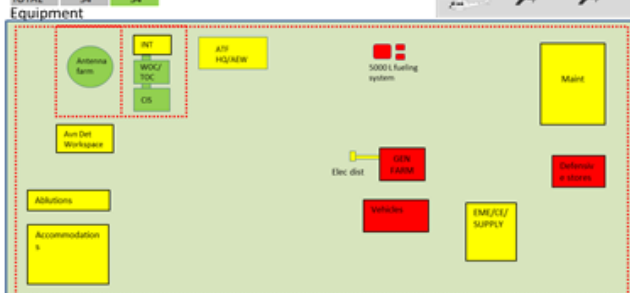
Updated as of: 01 Feb 17

Caveats:

1. Pers status to be updated monthly.
2. Med and Lg ATF pers and equipment approximates; to be refined for future submissions.

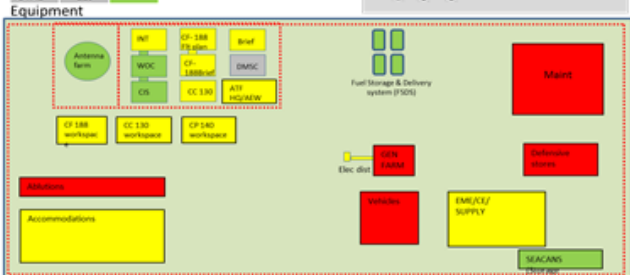
Small ATF: 150 pers, 48 hrs NTM

Personnel	TO&E	Status	Tools	PLUK
ATT HQ	3	3		
OSE	16	16		
MSE	29	29		
FPE	6	6		
TOTAL	54	54		



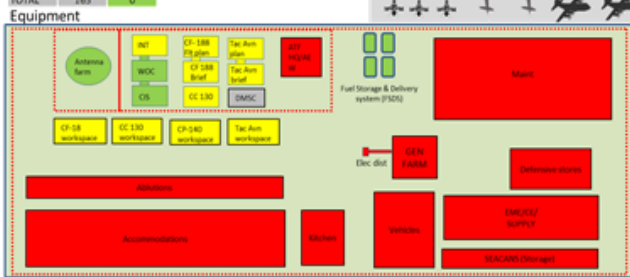
Medium ATF: 300 pers, 7d NTM

Personnel	TO&E	Status	Tools	PLUK
ATT HQ	6	6		
OSE	32	32		
MSE	60	60		
FPE	32	32		
TOTAL	130	130		



Large ATF: 550 pers, 14 d NTM

Personnel	TO&E	Status	Tools	PLUK
ATT HQ	20	20		
OSE	35	35		
MSE	90	90		
FPE	20	20		
TOTAL	365	365		



Green	able to sp
Yellow	able to sp with limitations
Red	unable to sp

2 Wing - Capabilities & Readiness

Capability		NTM			Notes
		Sm	Md	Lg	
C2	ACCE				
	ATF HQ				
	Flt Safety				
OSE	Current Ops				Pers augmentation req'd to sp large ATF
	Int				
	Met				Augmentation req'd to sp 24/7 large ATF
	Maint/Armament				
	CIS				
MSE	EOD advisor				Advising only, no disposal capability
	Mov				
	ARFF/Prevention				Prevention only, no ARFF equipment
	Transport				No vehs
	Feeding				Sm, rats only. 30d for field ktch, CFTPO req'd
	Contracting/LPO				
	Supply				
	RCME				
	CE				Power generation is RED
	HR/Fin				
FPE	Ammo tech				Position vacant
	Auxiliary Sec. Force				CFTPO req'd med/lg
	CBRN				Position vacant
Add-ons	TASO (ITL)				No specific NTM
	CGS				No specific NTM
	Air Traffic Services				MPN-25 UNSCVBL
	ASAR				

2 Wing - Outlook

Current tasks/op/ex (30 d)	Start	End	Notes
CFB Bagotville Hgr 3 Reno	16-nov	03-mars	AES CEF, 8 ACCS B Fit
EX GREEN FLAG, Little Rock	07-févr	20-févr	CIS sp to 436 sqn in Arkansas
EX STRIKING VIKING	12-feb	06-mars	CIS sp to 450 sqn in California
EX READY RENAISSANCE	17-févr	01-mars	Rehearsal of lightweight AESS depl.
Future tasks (next 120 d)	Start	End	Notes
ATF-I R5 CT	24-avr	15-mai	CT of roto 5 by 2 ERC
EX READY ANGLE	24-avr	05-mai	RCAF LP for NEO exercise
EX PHOENIX GHOST	17-mars	13-apr	2AES FG in YOD
EX RAMMSTEIN AMBITION	24-avr	05-mai	Participation in NATO CAOC CAX
EX MAPLE RESOLVE 17	06-mai	01-juin	Validation for EATM
OP REASSURANCE ICELAND	may	june	CIS & FP (TBC)
OP BOXTOP 1-17	20-mai	05-juin	ATC services in CFS Alert

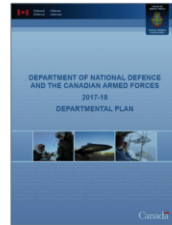
Top 5 concerns

1. 2 Wing & 8 ACCS MIP endorsement
2. HTU designation & overall manning concerns
3. Climate-controlled space for current HR equipment
4. Receipt of AFEC equipment
5. Access to PPE for HR personnel

Historical Analysis

How many operations of each type has the CAF been involved in since 1990?

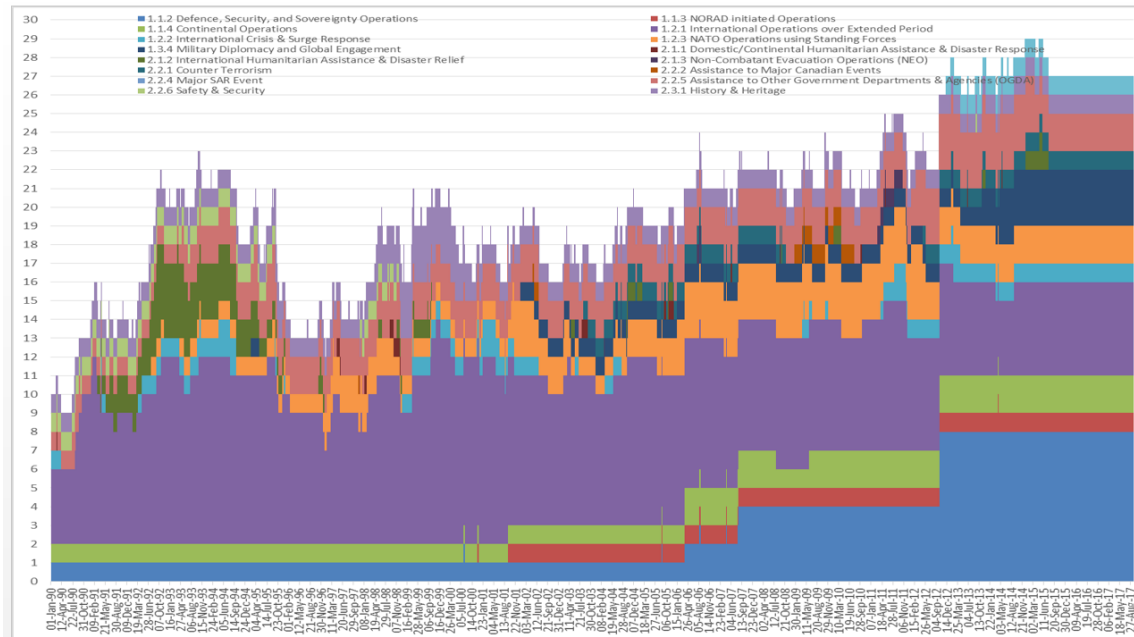
Row Labels	Count of Strategic Outcome
1.1.2 Defence, Security, and Sovereignty Operations	846
1.1.3 NORAD Initiated Operations	6
1.1.4 Continental Operations	597
1.2.1 International Operations over Extended Period	455
1.2.2 International Crisis & Surge Response	65
1.2.3 NATO Operations using Standing Forces	50
1.3.4 Military Diplomacy and Global Engagement	61
2.1.1 Domestic/Continental Humanitarian Assistance & Disaster Response	144
2.1.2 International Humanitarian Assistance & Disaster Relief	86
2.1.3 Non-Combatant Evacuation Operations (NEO)	4
2.2.1 Counter Terrorism	16
2.2.2 Assistance to Major Canadian Events	64
2.2.4 Major SAR Event	4
2.2.5 Assistance to Other Government Departments & Agencies (OGDA)	93
2.2.6 Safety & Security	7
2.3.1 History & Heritage	17
CLASSIFIED OPERATIONS (UNCLAS TOMBSTONE DATA ONLY)	13
Operations Prior to 1990 (TOMBSTONE DATA ONLY)	65
Outside SW DB Scope (TOMBSTONE DATA ONLY)	10
Subordinate Operations (TOMBSTONE DATA ONLY)	13
Unexecuted and Cancelled Operations (TOMBSTONE DATA ONLY)	13
(blank)	
Grand Total	2629



Program 1.0 Defence Combat and Support Operations
Program 2.0 Defence Services and Contributions to Government
Program 3.0 Defence Ready Force Element Production
Program 4.0 Defence Capability Element Production
Program 5.0 Defence Capability Development and Research

Two sustained deployments of ~500-1500 personnel, including one as lead nation

Row Labels	Count of Sort Name	Max of Max Air Pers	Max of Max Total Pers
Globemaster III/	50	363	2657
Hercules/	1		0
Hercules/Husky/	6	71	71
Hercules/Polaris/	8	107	107
Hercules/Polaris/Globemaster III/Hornet/Sea King/Aurora/	3		221
Hercules/Polaris/Globemaster III/Hornet/Aurora/	1		0
Hercules/Polaris/Sea King/	1		195
Hercules/Polaris/Sea King/Hercules/	1	114	309
Hercules/Griffon/Chinook/	1	450	1750
Husky/	1		0
Twin Otter/Twin Huey/	1	110	110
Polaris/Hornet/Aurora/	1	600	600
Polaris/Sea King/	1		195
Hornet/	4	430	550
Sea King/	10	130	969
Sea King/Twin Huey/	1	93	1067
Twin Huey/Jet Ranger/	1	130	171
Griffon/	14	153	840
Aurora/	1		25
Grand Total	108	600	2657



RAWC Educated Guesses

ATF 1 – Jupiter”ish” Sustained (Libya)

- Capabilities
 - Air Attack
 - 6-18 x F18s
 - AAR
 - 1-2 x CC130s
 - ISR
 - 1-2 x CP140s
- Requirements
 - ATF CE – 100 pers
 - AESSD – 300 pers
 - OSE (200 pers)
 - MSE (100 pers)
 - Air Dets – 350 pers
- Total = 750 pers

ATF 2 – NEO Short-Term (Mali)

- Capabilities
 - Inter-Theatre Airlift
 - 1-2 CC177s
 - Intra-Theatre Airlift
 - 1-3 CC130s
- Requirements
 - ATF CE – 15 pers
 - AESSD – 135 pers
 - OSE (60 pers)
 - MSE (75 pers)
 - Air Dets – 100 pers
- Total = 250 pers

ATF 3 – Land-Support Sustained (Afghanistan)

- Capabilities
 - Tac Avn
 - 4-10 x CH146s
 - 2-4 x CH147s
 - Air Mobility
 - 1-3 x CC130s
 - ISR
 - 1-2 x CP140s
- Requirements
 - ATF CE – 50 pers
 - AESSD – 200 pers
 - OSE (100 pers)
 - MSE (100 pers)
 - Air Dets – 250 pers
- Total = 500 pers

Const Engr FEC



National
Defence

Défense
nationale

B-GA-403-114/FP-001

Royal Canadian Air Force
Construction Engineering
Force Employment Concept

Version 1

Issued on authority of Commander 1 Canadian Air Division

Custodian: 1 Cdn Air Div HQ/A4 CE

2018-02-02

Canada

Final thoughts...

- ATF model will work, but...
- Concurrent operations are nothing new!
- Const Engr FEC is leading the way in getting the RCAF to think in terms of Force Elements
- Are we ready...

USAF FUTURE OPERATING CONCEPT (September 2015)

AF forces are rapidly able to move into austere locations and establish control of aerial ports and associated airspace to provide security, order, and safety. Expeditionary AF forces operate from small, resilient airbases, using dispersal, warning, active and passive defenses, and rapid repair capabilities to survive and continue to fight.